



# ZESTO

Luminaire design: Jean-Marie DUTHILLEUL

Architectural luminaire par excellence, **ZESTO** is comfortable in all urban lighting roles.

A successful design bringing together volumes that, by nature, fusing into a configuration combining just the right amount of strength and softness; from this balance arises the soul of a well-conceived product, giving the town a signature that is both calming and up-to-date.

**ZESTO** is available in one size. Several specific models of cross-arms, brackets and bollards can be used with it.



INTEGRATED BLS STRIPS



Zesto on Zesto bracket



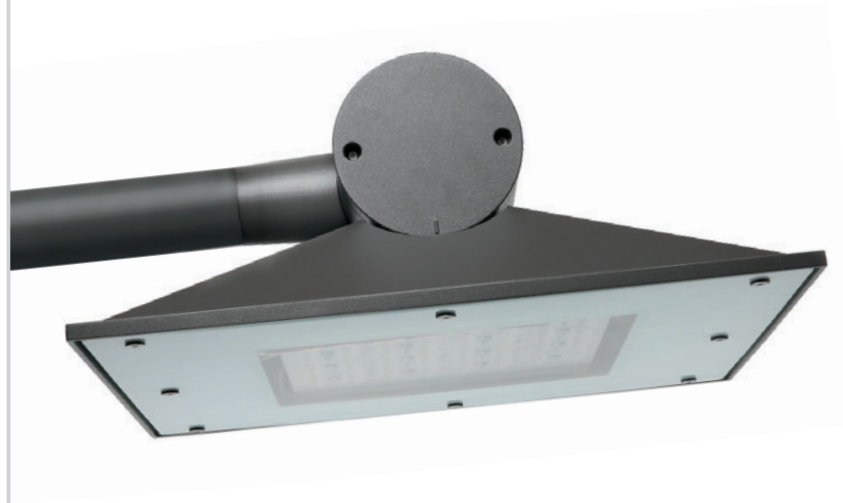
Zesto Catenary



Zesto on Zesto bracket



ZESTO



### APPLICATIONS

- Mounting: side and catenary
- Pedestrian areas, cycle paths, residential areas, street lighting
- Recommended heights: 4 to 8 m

### DESCRIPTION

- Body and equipment compartment in die-case aluminium
- Bowl in thermally tempered and screen printed glass
- Polyester powder coating, any colour available
- IP 66
- IK 08
- Class I or II
- Luminaire pre-wired in the factory (6 m)
- Standard BLS LED strips equipped with **QUADRALENS** lenses
- Colour temperature: 2400 K, 2700 K, 3000 K or 4000 K

### CITIZEN REFERENCE POINTS

- Materials used: Aluminium 66%, Glass 24%, Steel 5%, Other 5%
- Complies with the RoHS directive
- High recyclability rate

### WATERPROOFING

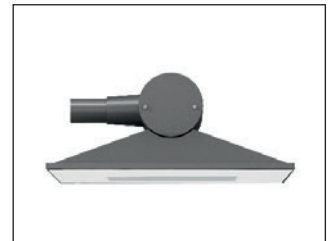
- IP 66 waterproofing in accordance with the standard EN 60 529
- Extruded pneumatic silicone gasket
- Cable gland with anchoring device
- Breathing system with activated carbon filter

### MECHANICAL INTERFACES

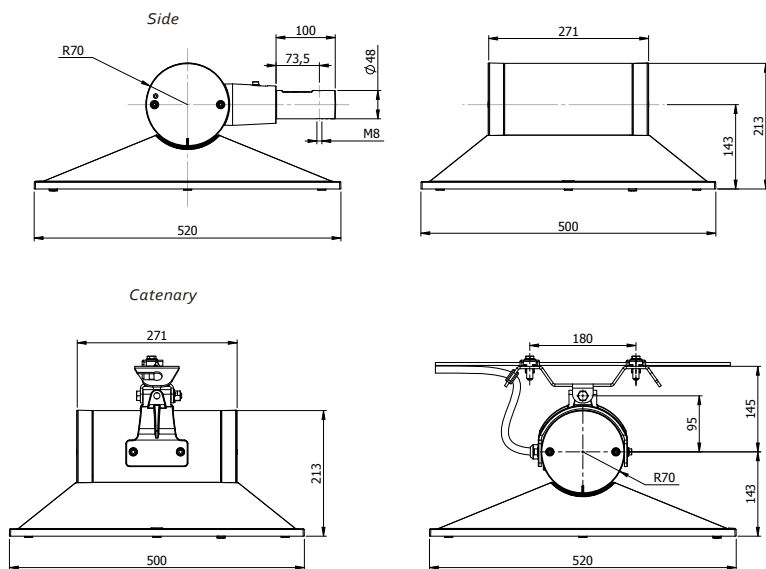
- Suspended catenary
- LL: Smooth side with pass through sleeve for Ø 60 mm arm
- Tilts from -15° to +15° in 5° steps
- Standard tilt: 0°



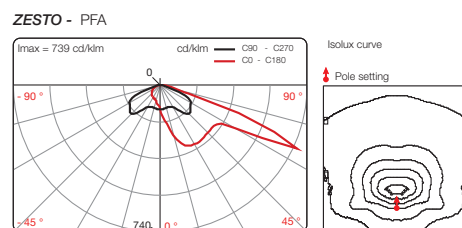
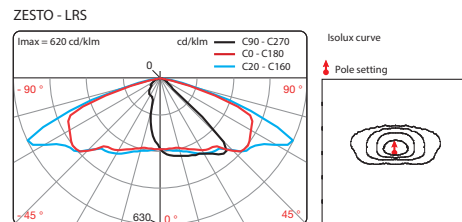
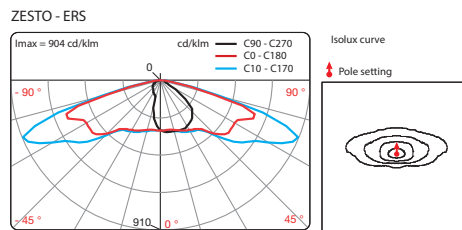
Catenary



Side



PHOTOMETRIC DISTRIBUTIONS



KEY POINTS

		ZESTO
<b>Applications</b>		Pedestrian areas, cycle paths, residential areas, street lighting
<b>Recommended heights</b>		4 to 8 m
<b>Mounting</b>		Side and catenary
<b>Dimensions</b>	<b>Length</b>	520 mm
	<b>width</b>	500 mm
	<b>height</b>	216 mm
<b>Weight</b>		13 kg
<b>Windage area</b>		0,26 m <sup>2</sup>
<b>Sources</b>		BLS strips
<b>Sources access</b>		The plate is removable without using tools after opening with 2 captive screws
<b>Optics and light distribution options</b>		QUADRALENS <sup>®</sup> : ECa, ERS, ERL, ERE, LRS, LRL, EPD, EPG, PFA
<b>OPTIONS</b>	<b>Backlight shield<sup>(1)</sup></b> (factory or site assembly)	○
	<b>DALI</b> (construction)	○
	<b>Dimming 5</b> (preset)	○
	<b>CLO</b> (preset)	Compatible with standard version, Dimming 5 or DALI option
	<b>Motion P</b> (set in the bottom of the pole)	○
	<b>Motion COM</b> (setting on site)	○
	<b>POLEDRIVE</b> (set in the bottom of the pole)	○

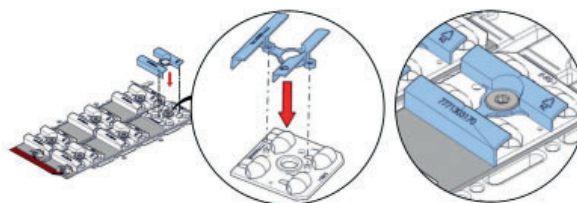
(1) Backlight shield optional except for EPD, EPG, ECA

Glossary:

● Standard ○ Option - Not available

**E/L/P:** Lighting/Luminance/Projection, **R/C/T/F/P:** Road/Circulation/Path/Beam/Pedestrian walkway, **E/S/L/A/D/G:** Narrow/Standard/Wide/Asymmetric/Right/Left, **POLEDRIVE:** preset at the bottom of the pole / night dimming calculator with 2 configurable thresholds, set in the bottom of the pole, **Dimming 5:** night dimming calculator with 5 configurable thresholds, **Motion:** moving sensor, **Motion P:** Configurable offset presence detector at the foot of the pole, **Motion DALI:** Detector integrated to the luminaire, adjustable at pole base, **Motion 5:** Motion sensor and dimming calculator, **Motion COM:** Wireless detection and communication, **DALI:** compatible with the DALI protocol, **CLO:** Constant Lumen Output option

BACKLIGHT SHIELD



Backlight shield BLS version

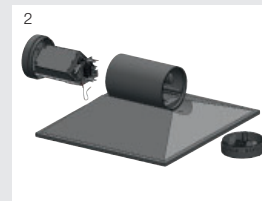
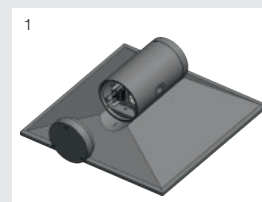
MAINTENANCE

Lighting equipment maintenance

Opening of the equipment cylindrical cover by 2 trapped screws {1}  
Electrical disconnection and equipment board removable without tools {2}

Source maintenance

Access to LED optical module after removal of the bowl with 8 screws (retention line)  
Quick electrical disconnection without tools.  
Dismounting of the optical module with 6 screws (eyelet).





ECLATEC

led verlichting

banken

*afvalbakken*

custom made producten

houten lichtmasten

stalen lichtmasten

*solar verlichting*

lichtzuilen

bandstand

boomroosters

plantenbakken

fietsrekken

*klassieke lichtmasten*

openbare verlichting

terrein verlichting

afzetzpalen

standbeelden

kunst

bollards

fonteinen

Auteursrechten en intellectuele eigendomsrechten

Het auteursrecht op deze brochure berust bij GHM Eclatec B.V. of bij derden (GHM SA en Eclatec SAS) welke met toestemming dit (beeld) materiaal beschikbaar hebben gesteld aan GHM Eclatec B.V. Vermenigvuldiging in wat voor vorm dan ook is alleen toegestaan na voorafgaande toestemming door GHM Eclatec B.V.

Copyright © 2019 GHM Eclatec BV.

Foto credits: ©Eclatec, ©Fotolia, ©Shutterstock, ©GHM

Alle rechten voorbehouden

GHM Eclatec BV Tinstraat 91 2984 AN Ridderkerk 0031 (180) 745043  
info@ghm-eclatec.nl www.ghm-eclatec.nl KVK Rotterdam 53536991

Onderdeel van Agora Technologies