

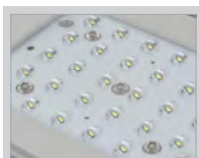
TAÏGA

Luminaire design: ECLATEC

When simplicity and efficiency go hand in hand...

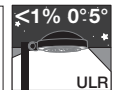
TAÏGA is proof that a straight line is sometimes the best and also the most assertive answer for certain current architectural dialectics.

TAÏGA brings together a group of refined solutions of steel rectangular section poles equipped with **TABLED 2** modules, in single, double or paired lights for heights ranging from 4 to 7 metres.



TABLED 2 MODULE





TAÏGA



APPLICATIONS

- Mounting: finished product.
- Urban routes, pedestrian walkways, cycle paths, squares, parks and pedestrian areas.
- Recommended heights: 4 to 7 m

DESCRIPTION

- Pole/luminaire made of hot dipped galvanised rectangular section steel (Height 4 and 5m: 120 x 220mm ; Height 6 and 7m: 150 x 250mm)
- Polyester powder coating, any RAL colour available
- IP66
- IK07
- Class I or II
- **TABLED 2** modules with mono lense
- Colour temperature: 4000 K and 3000 K
- Luminaire eligible for Energy Saving Certificates

CITIZEN REFERENCE POINTS

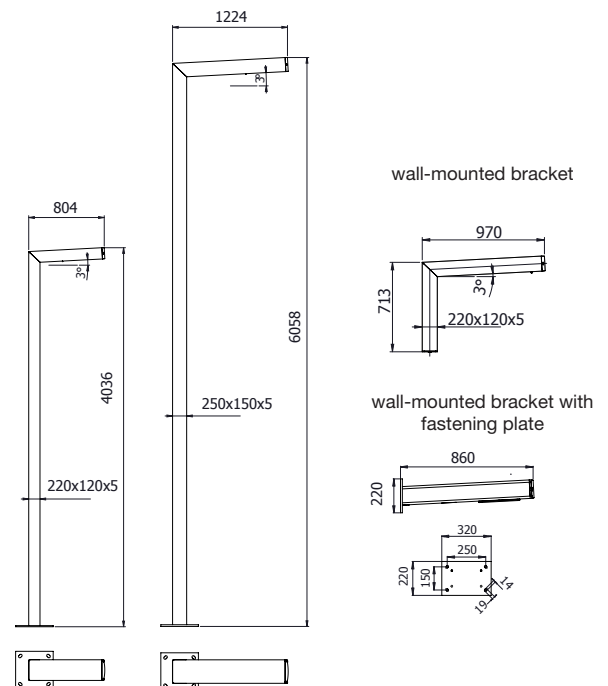
- Materials used: Steel 99%, Other 1%
- Complies with the RoHS directive
- ULR < 1%

WATERPROOFING

- luminaire part: IP66 waterproofing in accordance with the standard EN 60 529
- Silicone gasket

MECHANICAL INTERFACES

- Flange place fixing centers 300 x 300 mm
- 4 anchor bolts JT-M18 x 400



TAÏGA		
Applications	Urban routes, pedestrian walkways, cycle paths, squares, parks and pedestrian areas	
Recommended heights	4 to 7 m	
Mounting	Finished product. Assembly to be sealed delivered prewired with connection box	
Dimensions	4 and 5 m, section: 120 x 220 mm 6 and 7 m, section: 150 x 250 mm	
Weight	Taïga 7 m: 260 kg / Taïga 6 m: 228 kg / Taïga 5 m + rear fixation: 241 kg / Taïga 4 m: 130 kg / Taïga wall-mounted bracket: 29 kg	
Windage area	Taïga 7 m: 2.48m ² / Taïga 6 m: 2.12m ² / Taïga 5 m + rear fixation: 2.12 m ² / Taïga 4 m: 1.25 m ² Taïga wall-mounted bracket: 0.15m ²	
Source	TABLED 2	
Sources access	Removable TABLED 2 module	
Optics and light distribution options	Mono lense: ERS, ERL	
OPTIONS	POLEDRIVE (set in the bottom of the pole)	○
	Dimming 5 (preset)	○
	Motion (setting on site)	-
	Motion P (set in the bottom of the pole)	○
	Motion DALI (set in the bottom of the pole)	-
	Motion 5 (preset)	-
	DALI (preset)	○
	FC	Compatible with standard version, Dimming 5 and DALI option

Glossary:

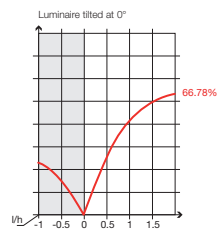
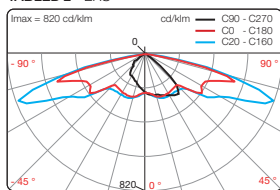
● Standard ○ Option - Not available

E/L/P: Lighting/Luminance/Projection, **R/C/T/F/P:** Road/Circulation/Path/Beam/Pedestrian walkway, **E/S/L/A/D/G:** Narrow/Standard/Wide/Asymmetric/Right/Left, **POLEDRIVE:** preset at the bottom of the pole / night diming calculator with 2 configurable thresholds, set in the bottom of the pole, **Dimming 5:** night diming calculator with 5 configurable thresholds, **Motion:** moving sensor, **Motion P:** Configurable offset presence detector at the foot of the pole, **Motion DALI:** Detector integrated to the luminaire, adjustable at pole base, **Motion 5:** Motion sensor and dimming calculator, **Motion COM:** Wireless detection and communication, **DALI:** compatible with the DALI protocol, **FC:** Compensated flux

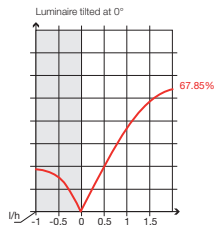
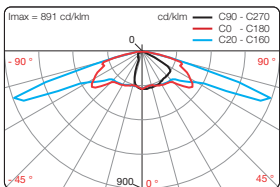


PHOTOMETRIC DISTRIBUTIONS

TABLED 2 - ERS



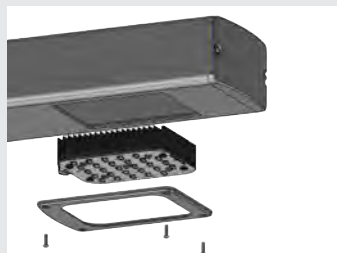
TABLED 2 . ERL



MAINTENANCE

Lighting equipment maintenance

The device can be replaced after removing 2 screws on the top. Connection box accessible via the door at the bottom of the pole



Source maintenance

Access to the TABLED 2 module after removing 4 screws from the arch.



ECLATEC

led verlichting

banken

afvalbakken

custom made producten

houten lichtmasten

stalen lichtmasten

solar verlichting

lichtzuilen

bandstand

boomroosters

plantenbakken

fietsrekken

klassieke lichtmasten

openbare verlichting

terrein verlichting

afzetpalen

standbeelden

kunst

bollards

fonteinen

Auteursrechten en intellectuele eigendomsrechten

Het auteursrecht op deze brochure berust bij GHM Eclatec B.V. of bij derden (GHM SA en Eclatec SAS) welke met toestemming dit (beeld) materiaal beschikbaar hebben gesteld aan GHM Eclatec B.V. Vermenigvuldiging in wat voor vorm dan ook is alleen toegestaan na voorafgaande toestemming door GHM Eclatec B.V.

Copyright © 2019 GHM Eclatec BV.

Foto credits: ©Eclatec, ©Fotolia, ©Shutterstock. ©GHM

Alle rechten voorbehouden

GHM Eclatec BV Tinstraat 91 2984 AN Ridderkerk 0031 (180) 745043
info@ghm-eclatec.nl www.ghm-eclatec.nl KVK Rotterdam 53536991

Onderdeel van Agora Technologies