



Designer & Manufacturer



ECLATEC, FOR LIGHT MANAGEMENT



“Lighting right”, is the aim of **ECLATEC**, designer and manufacturer of outdoor lighting solutions since 1927.

Its teams create effective, reliable solutions compliant with standards to provide quality lighting for the long term.

Through its major investment strategies in cutting edge technology and human qualifications, what makes the company’s reputation are quality of design and careful assembly and finishing.

ECLATEC, one of the rare businesses in the sector with French equity that also produces in France.

ECLATEC is a signatory of the United Nations Global Compact on corporate social responsibility and sustainable development.



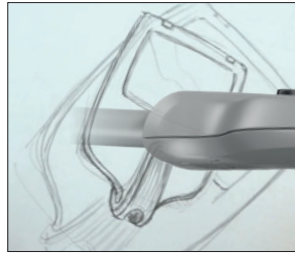
SMART INTERCONNECTED AND RELIABLE LUMINAIRES



Public lighting is a challenge for local authorities that manage the following issues every day:

- energy consumption with cost control
- the environment and light pollution
- the safety and well-being of citizens

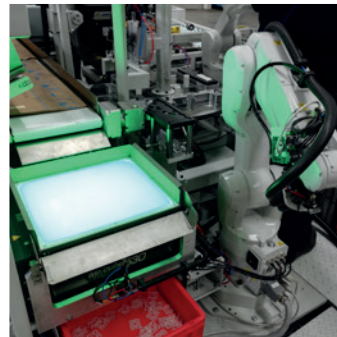
ECLATEC plays an active part in seeking the most suitable solutions. The company has repeatedly developed so-called “smart” luminaires that offer unrivalled energy consumption and reliability performances.



CUTTING EDGE TECHNOLOGY ...

The company's reputation is a result of its quality of design and careful assembly and finishing. ECLATEC constantly invests in research and development on its lighting solutions, giving itself the resources for high technological value measures and specific test laboratories to create its products:

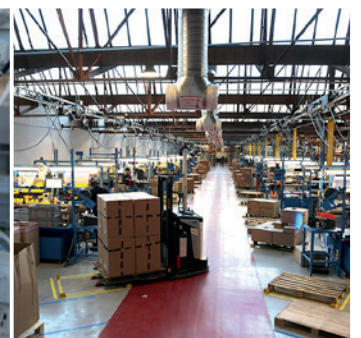
- Mechanical and photometric design offices
- A laboratory equipped with a photogoniometer
- IP, IK, EMC test benches
- LED module assembly cells
- Cutting, welding and stamping lines



... AND THE STRENGTH OF INTEGRATED PRODUCTION

In its immediate sphere ECLATEC develops exceptional combinations of skills and integrated industrial resources, giving it perfect mastery of the design and manufacture of its solutions:

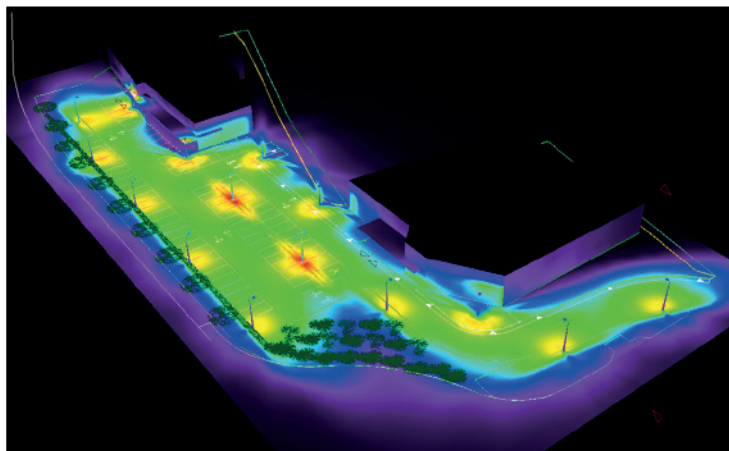
- Methods office
- Prototype workshop
- Assembly lines



PHOTOMETRIC KNOW-HOW

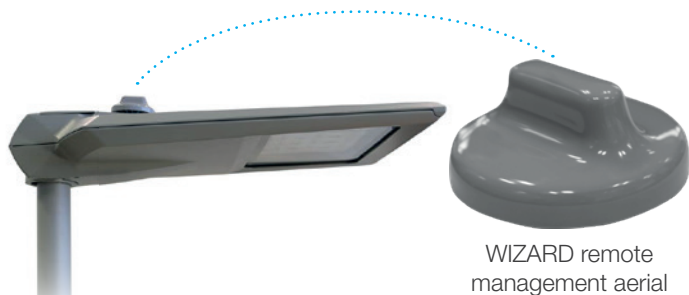
Energy savings, compliance with standards and lighting quality all require high quality luminaires.

Beyond those factors, studies that look at how they are implemented are an important source of energy optimisation: for every installation, the **ECLATEC** Lighting Advice department recommends the best power and settings.



LIGHTING RIGHT

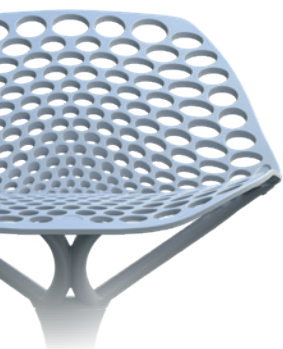
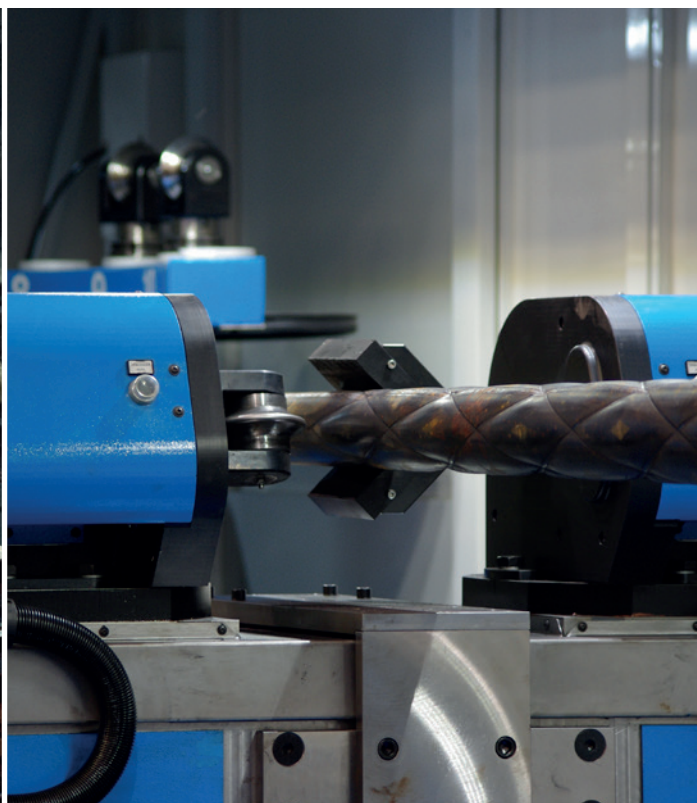
“Lighting right” means providing the required light optimally, without generating light pollution or undesirable optical effects. It also means designing efficient systems such as time slot programming, detection or remote management; **ECLATEC** develops exclusive solutions in those fields. **ECLATEC** is ISO 9001 - 14001 - 50001 certified and complies with the EcoDesign Directive, we apply the ISO 26000 CSR standard.



WIZARD remote management aerial



*“Our vocation:
to support citizens in the public space,
both by day and by night”*



GHM, MATERIAL KNOW-HOW



GHM is above all formidable creative power backed up by unique production resources. It has a rich history of prestige production: Wallace fountains, street lighting on the Champs-Élysées and the Alexandre III bridge in Paris, the Guimard metro entrances, ...

For over a 100 years, **GHM** has designed and marketed benches, posts, barriers, waste baskets, planters and fountains in both modern and classical styles. The inherent quality of this equipment and its careful design guarantees functions that are unanimously approved by city-dwellers over time.

GHM also proposes remarkable cast iron pole solutions to support tram lines; the use of casting gives an unbeatable freedom of design.

GHM has a Living Heritage Company label.



*Entreprise
du Patrimoine
Vivant*

*L'excellence
des savoir-faire
français*



AN EXCEPTIONAL PRODUCT RANGE

GHM manufactures a wide range of urban products. From benches to posts, barriers to waste baskets, lighting columns and signage but also, and above all, cast iron, steel or aluminium lighting columns and overhead catenary line supports that combine aesthetics and robustness in all styles and for well defined uses: modern or classical solutions, decorative or functional applications and very high lighting open up a range of possibilities.



A UNIQUE KNOW-HOW

GHM's metallurgical and mechanical know-how is unique. Based on a strong historical legacy, the design and production teams work daily to develop product ranges that contribute to moving the group forward in the modernity of the 21st century.

- Design and development offices
- Hand casting line
- Robotised line
- Finishing and painting workshop
- Storage area

GHM is ISO 9001 certified



WORKS OF ART, ...

Beyond standard productions, **GHM** is attentive to all architectural and urban developments, using its design and production capacities.



... AND A PRESTIGIOUS HISTORY

It has a rich history of prestige production: Wallace fountains, street lighting on the Champs-Élysées and the Alexandre III bridge in Paris, the Guimard metro entrances, overhead catenary line supports, ... For over a 100 years, **GHM** has been designing and marketing urban equipment for cities in France and elsewhere, such as Paris, Lyon, Moscow, Luxembourg, Florence, Marseilles, Bordeaux, Nice, Strasbourg, ... The inherent quality of this equipment and its careful design guarantees functions that are unanimously approved by city-dwellers over time.



A SUSTAINABLE AND HUMAN COMMITMENT

GHM-ECLATEC contributes to the long-term embellishment of urban sites while focussing on offering environmentally friendly solutions.

The group is not content with just complying with current regulations that limit production impacts on the environment, instead it has a responsible proactive approach alongside enthusiasm and energy, and passes down its traditional and technological know-how from generation to generation.





Rue Antoine Durenne
52220 SOMMEVOIRE - FRANCE
Phone: +33 (0)3 25 55 43 21



www.ghm-eclatec.com

info@ghm-eclatec.com

41 rue Lafayette
CS 20069 MAXEVILLE
54528 LAXOU Cedex - FRANCE
Phone: +33 (0)3 83 39 38 00