



ZESTO

Luminaire design: Jean-Marie DUTHILLEUL

Architectural luminaire par excellence, **ZESTO** is comfortable in all urban lighting roles.

A successful design bringing together volumes that, by nature, fusing into a configuration combining just the right amount of strength and softness; from this balance arises the soul of a well-conceived product, giving the town a signature that is both calming and up-to-date.

ZESTO is available in one size. Several specific models of cross-arms, brackets and bollards can be used with it.



INTEGRATED BLS STRIPS



Zesto on Zesto bracket



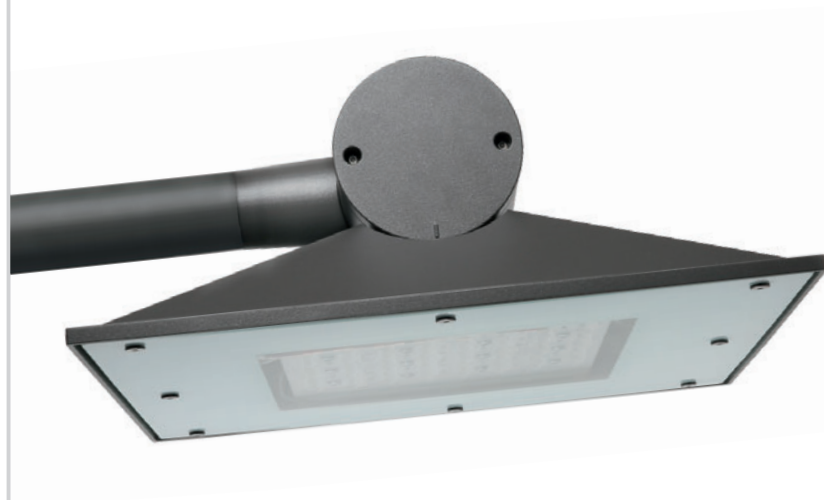
Zesto Catenary



Zesto on Zesto bracket



ZESTO



APPLICATIONS

- Mounting: side and catenary
- Pedestrian areas, cycle paths, residential areas, street lighting
- Recommended heights: 4 to 8 m

DESCRIPTION

- Body and equipment compartment in die-case aluminium
- Bowl in thermally tempered and screen printed glass
- Polyester powder coating, any colour available
- IP 66
- IK 08
- Class I or II
- Luminaire pre-wired in the factory (6 m)
- Standard BLS LED strips equipped with **QUADRALENS** lenses
- Colour temperature: 2400 K, 2700 K, 3000 K or 4000 K

CITIZEN REFERENCE POINTS

- Materials used: Aluminium 66%, Glass 24%, Steel 5%, Other 5%
- Complies with the RoHS directive
- High recyclability rate

WATERPROOFING

- IP 66 waterproofing in accordance with the standard EN 60 529
- Extruded pneumatic silicone gasket
- Cable gland with anchoring device
- Breathing system with activated carbon filter

MECHANICAL INTERFACES

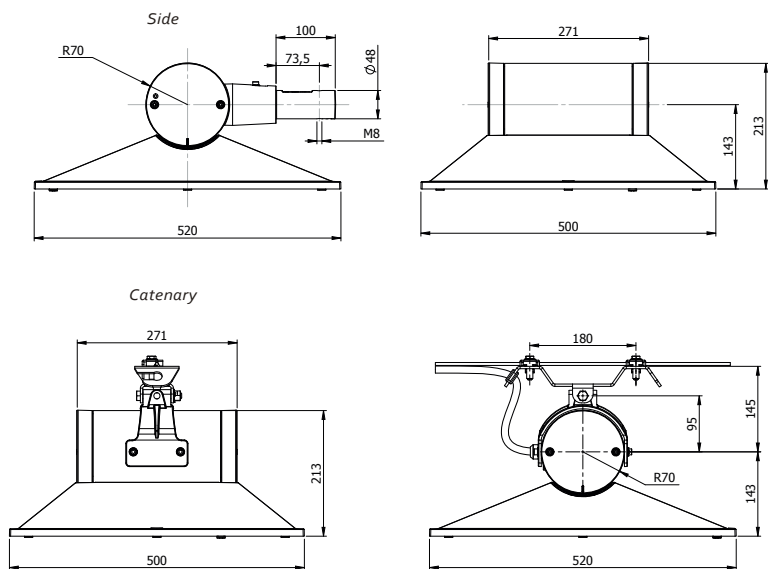
- Suspended catenary
- LL: Smooth side with pass through sleeve for Ø 60 mm arm
- Tilts from -15° to +15° in 5° steps
- Standard tilt: 0°



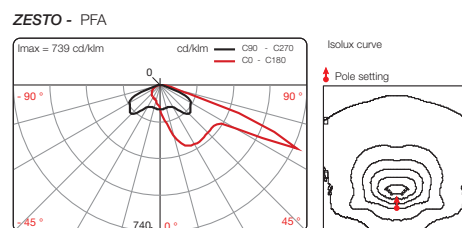
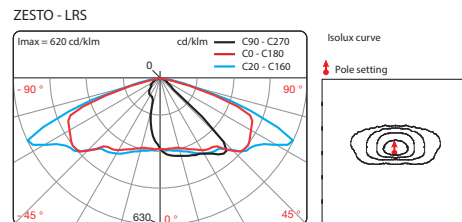
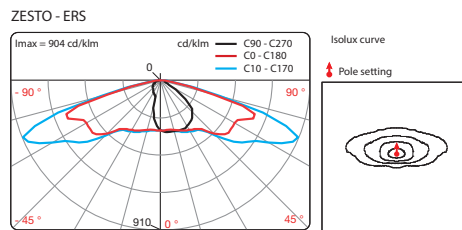
Catenary



Side



PHOTOMETRIC DISTRIBUTIONS



KEY POINTS

		ZESTO
Applications		Pedestrian areas, cycle paths, residential areas, street lighting
Recommended heights		4 to 8 m
Mounting		Side and catenary
Dimensions	Length	520 mm
	width	500 mm
	height	216 mm
Weight		13 kg
Windage area		0,26 m ²
Sources		BLS strips
Sources access		The plate is removable without using tools after opening with 2 captive screws
Optics and light distribution options		QUADRALENS [®] : ECa, ERS, ERL, ERE, LRS, LRL, EPD, EPG, PFA
OPTIONS	Backlight shield⁽¹⁾ (factory or site assembly)	<input type="radio"/>
	DALI (construction)	<input type="radio"/>
	Dimming 5 (preset)	<input type="radio"/>
	CLO (preset)	Compatible with standard version, Dimming 5 or DALI option
	Motion P (set in the bottom of the pole)	<input type="radio"/>
	Motion COM (setting on site)	<input type="radio"/>
	POLEDRIVE (set in the bottom of the pole)	<input type="radio"/>

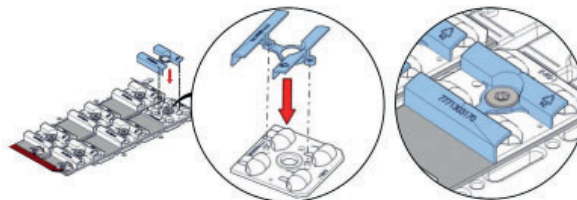
(1) Backlight shield optional except for EPD, EPG, ECa

Glossary:

● Standard ○ Option - Not available

E/L/P: Lighting/Luminance/Projection, **R/C/T/F/P:** Road/Circulation/Path/Beam/Pedestrian walkway, **E/S/L/A/D/G:** Narrow/Standard/Wide/Asymmetric/Right/Left, **POLEDRIVE:** preset at the bottom of the pole / night dimming calculator with 2 configurable thresholds, set in the bottom of the pole, **Dimming 5:** night dimming calculator with 5 configurable thresholds, **Motion:** moving sensor, **Motion P:** Configurable offset presence detector at the foot of the pole, **Motion DALI:** Detector integrated to the luminaire, adjustable at pole base, **Motion 5:** Motion sensor and dimming calculator, **Motion COM:** Wireless detection and communication, **DALI:** compatible with the DALI protocol, **CLO:** Constant Lumen Output option

BACKLIGHT SHIELD



Backlight shield BLS version

MAINTENANCE

Lighting equipment maintenance

Opening of the equipment cylindrical cover by 2 trapped screws {1}
Electrical disconnection and equipment board removable without tools {2}

Source maintenance

Access to LED optical module after removal of the bowl with 8 screws (retention line)
Quick electrical disconnection without tools.
Dismounting of the optical module with 6 screws (eyelet).

