



PIXEL

Luminaire design: STOA Architecture

The raw material of lighting is light. During the day, it is natural; it must be manufactured at night... the only reason for "lighting equipment" in a town: making light!

The **PIXEL** range offers:

- a perfectly discrete sober and elegant design; so that during the day the design disappears into the surrounding vista;
- a wide choice of high quality luminaires suitable for various urban situations so that, during the night, the light emphasises the town;
- a technology that is economical in manufacturing, consumption and maintenance; to last a long time in the town, during the day as well as the night.



INTEGRATED BLS STRIPS

Stoa Architecture



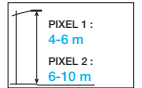
Pixel on Musa bracket



Pixel on Maka bracket



Pixel on Pico bracket



PIXEL 1 - presented with moving sensor



PIXEL 2



APPLICATIONS

- Mounting: Top, bitop, side entry
- Pixel 1: Urban routes, pedestrian walkways, cycle paths and residential lighting.
Pixel 2: Roads, secondary urban and inter-urban streets
- Recommended heights: Pixel 1: 4 to 6 m / Pixel 2: 6 to 10 m

DESCRIPTION

- Luminaire available in 2 sizes: PIXEL 1 and PIXEL 2
- Body and frame in injected die-cast aluminium
- Silkscreen printed, thermally toughened flat glass
- Luminaire opens without tools
- Luminaire fixation top or lateral
- Polyester powder coating, any colour available
- IP 66
- IK 09
- Standard BLS LED strips equipped with **QUADRALENS** lenses
- Colour temperature: 2400 K, 2700 K, 3000 K or 4000 K
- Class I or II
- Luminaire pre-wired in the factory (6 m)

CITIZEN REFERENCE POINTS

- Materials used:
 - Pixel 1: Aluminium 63%, Other 22%, Glass 9%, Steel 5%, Plastic 1%
 - Pixel 2: Aluminium 65%, Other 19%, Glass 11%, Steel 4%, Plastic 1%
- Complies with the RoHS directive
- High recyclability rate

WATERPROOFING

- IP 66 waterproofing in accordance with the standard EN 60 529
- Extruded silicone gasket
- Cable gland with anchoring device
- Breathing system with activated carbon filter

MECHANICAL INTERFACES

- Top fixation, male fastening for pole \varnothing 60 - 62 mm
Penetration of 100 mm onto the pole
For pole \varnothing 76 mm top, optional spigot A (see page 278)
Luminaire tilted at 7°
- L: Side entry coupled with sleeve for tube (\varnothing 60 mm exterior) (see page 278 - E, F)
- L: side entry for rectangular tube (50x70 mm) (see page 278 - E, F)
- Pathway bracket with fastening plate
- Wall-mounted bracket



Top fixation



Side entry coupled with sleeve for tube



Side entry for rectangular tube



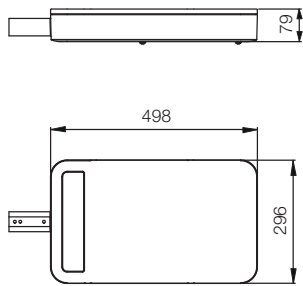
Wall-mounted bracket

MIRROR EFFECT OPTION

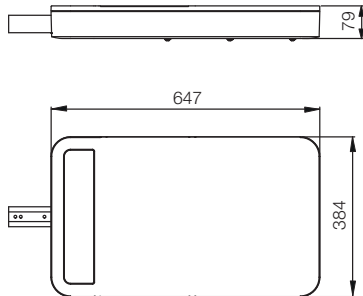


Without options

With blue reflecting mirror option



PIXEL 1



PIXEL 2

KEY POINTS

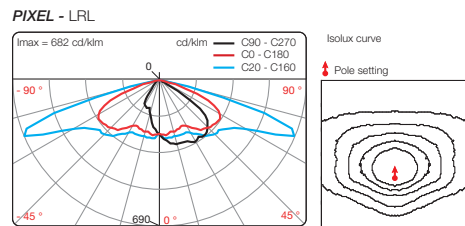
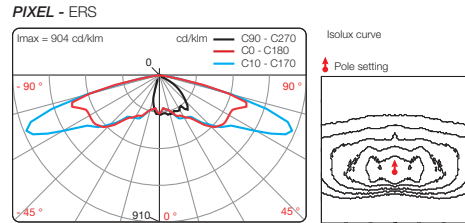
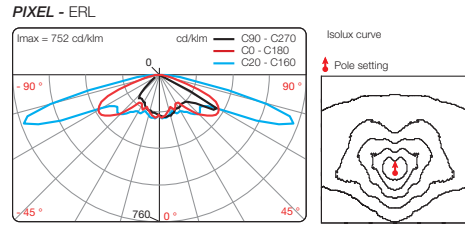
| | PIXEL 1 | PIXEL 2 | |
|-----------------------------------------------------|-----------------------------------------------------------------------------------------------------------------------|----------------------------------------------------------------------|-----------------------|
| Applications | Urban routes, pedestrian walkways, cycle paths and residential lighting. | Roads, secondary urban and inter-urban streets | |
| Recommended heights | 4 to 6 m | 6 to 10 m | |
| Mounting | Top, bitop, side entry | | |
| Dimensions | Length | 498 mm | 647 mm |
| | width | 296 mm | 384 mm |
| | height | 79 mm | 79 mm |
| Weight | 9 kg | 12,5 kg | |
| Windage area | 0,06 m ² | 0,08 m ² | |
| Sources | BLS strips | | |
| Sources access | Opens without tools by pressing the push-strip on the top casting. Direct access to the LED bars by removing the bowl | | |
| Optics and light distribution options | QUADRALENS⁽¹⁾ | | |
| | ERS, ERL, ERE, LRL, ECa, LRS, PFA, ETS, EPD, EPG | ERS, ERL, ERE, LRL, LRS, PFA, ECa | |
| OPTIONS | Backlight shield⁽¹⁾ (factory or site assembly) | <input type="radio"/> | <input type="radio"/> |
| | SMART-READY[®] (2) by Eclatec (construction) | <input type="radio"/> | <input type="radio"/> |
| | DALI (construction) | <input type="radio"/> | <input type="radio"/> |
| | Dimming 5 (preset) | <input type="radio"/> | <input type="radio"/> |
| | CLO (preset) | Compatible with standard version, Dimming 5, Motion 5 or DALI option | |
| | Motion 5 (preset) | <input type="radio"/> | - |
| | Motion (setting on site) | <input type="radio"/> | - |
| | Motion COM (setting on site) | <input type="radio"/> | <input type="radio"/> |
| | Motion DALI (set in the bottom of the pole) | <input type="radio"/> | - |
| | Motion P (set in the bottom of the pole) | <input type="radio"/> | <input type="radio"/> |
| POLEDRIVE (set in the bottom of the pole) | <input type="radio"/> | <input type="radio"/> | |

(1) Backlight shield optional except for EPD, EPG, ECa
 (2) Preconfigured communicating system: Wired Sensor Ready type driver and Zhaga consortium base

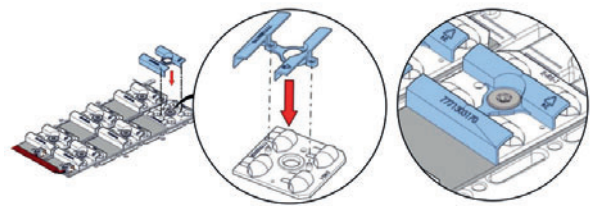
Glossary:
 Standard Option - Not available

E/L/P: Lighting/Luminance/Projection, **R/C/T/F/P:** Road/Circulation/Path/Beam/Pedestrian walkway, **E/S/L/A/D/G:** Narrow/Standard/Wide/Asymmetric/Right/Left, **POLEDRIVE:** preset at the bottom of the pole / night dimming calculator with 2 configurable thresholds, set in the bottom of the pole, **Dimming 5:** night dimming calculator with 5 configurable thresholds, **Motion:** moving sensor, **Motion P:** Configurable offset presence detector at the foot of the pole, **Motion DALI:** Detector integrated to the luminaire, adjustable at pole base, **Motion 5:** Motion sensor and dimming calculator, **Motion COM:** Wireless detection and communication, **DALI:** compatible with the DALI protocol, **CLO:** Constant Lumen Output option

PHOTOMETRIC DISTRIBUTIONS



BACKLIGHT SHIELD



Backlight shield BLS version

MAINTENANCE

Opening and closing

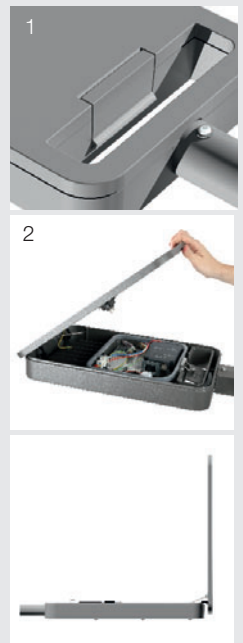
Opens without tools by pressing the paddle on the top cover. {1}
 Cutting of the power supply when the luminaire is opened. The cover is held open by a safety prop.

Lighting equipment maintenance

Direct access to the equipment {2}
 Quick electrical disconnection without tools. Circuit board removable onsite without tools.

Source maintenance

Direct access to the BLS LED strips after removal of the bowl (4 or 6 attachment screws).



LED Luminaires

Modern Streetfurniture

Waste bins

Bollards Light

tree grill

Bollards

Classic poles cast iron

Steel poles

MODERN POLES CAST IRON

Defence bollards

Drinking water fountain

SEATING

TRAMWAY POLES

Modern LED luminaires

Classic luminaires

Classic street furniture

Ghm

Rue Antoine Durenne
52220 Sommevoire
France
Tel nr. 0033 3 25 55 23 03

ECLATEC

41 rue Lafayette
54320 Maxeville
France
Tel nr. 0033 3 83 39 38 28

Export internet : www.ghm-eclatec.com

Email export: info@ghm-eclatec.com